



Device Net

Trunk Cable 203



Drop Cable 203



Accessories... 209-213





Device Net MIN Cables

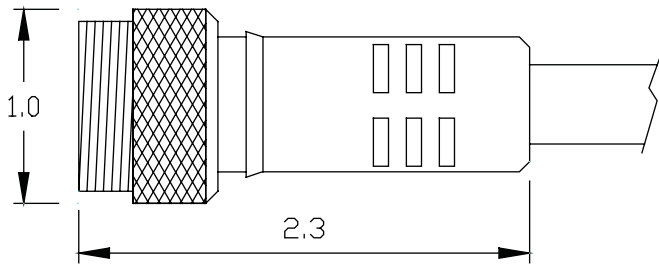
Single & Double Ended Cables

Trunk Cable - (Thick Cable)							
Face View of Male	# of Poles	Color Code	Wire AWG Rating	Length	Female Straight	Male Straight	Male - Female Extension
	5	1-Bare (Drain) 2-Red (V+) 3-Black (V-) 4-White (CAN_H) 5-Blue (CAN_L)	15 & 18 300V 8A	1M 2M 5M 10M	MINDT-5FP-1M MINDT-5FP-2M MINDT-5FP-5M MINDT-5FP-10M	MINDT-5MP-1M MINDT-5MP-2M MINDT-5MP-5M MINDT-5MP-10M	MINDT-5MFP-1M MINDT-5MFP-2M MINDT-5MFP-5M MINDT-5MFP-10M

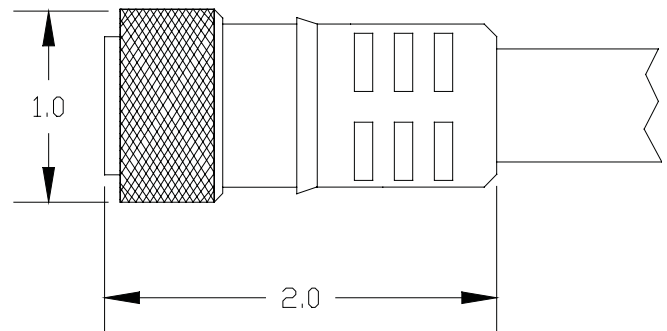
Drop Cable - (Thin Cable)							
Face View of Male	# of Poles	Color Code	Wire AWG Rating	Length	Female Straight	Male Straight	Male - Female Extension
	5	1-Bare (Drain) 2-Red (V+) 3-Black (V-) 4-White (CAN_H) 5-Blue (CAN_L)	22 & 24 300V 4A	1 M 2 M 4 M 5 M 10 M	MINDD-5FP-1M MINDD-5FP-2M MINDD-5FP-4M MINDD-5FP-5M MINDD-5FP-10M	MINDD-5MP-1M MINDD-5MP-2M MINDD-5MP-4M MINDD-5MP-5M MINDD-5MP-10M	MINDD-5MFP-1M MINDD-5MFP-2M MINDD-5MFP-4M MINDD-5MFP-5M MINDD-5MFP-10M

Right Angle Versions are available, please consult the factory.

Straight Male Plug



Straight Female Plug



Trunk Cable Specifications:

Body: Oil Resistant Yellow PVC
 Contacts: Copper Alloy with Gold Plating
 Coupling Nut: Clear Anodized Aluminum
 Cable: Oil Resistant Gray PVC Jacket,
 Rated at 150V, 80°C,
 15 AWG Tinned Copper Power Pair
 18 AWG Tinned Copper Data Pair
 Temperature: -40°C to + 80°C (-40°F to +176°F)
 Protection: IP 67

Drop Cable Specifications:

Body: Oil Resistant Yellow PVC
 Contacts: Copper Alloy with Gold Plating
 Coupling Nut: Clear Anodized Aluminum
 Cable: Oil Resistant Gray PVC Jacket,
 Rated at 150V, 80°C,
 22 AWG Tinned Copper Power Pair
 24 AWG Tinned Copper Data Pair
 Temperature: -40°C to + 80°C (-40°F to +176°F)
 Protection: IP 67

Device Net MIN Receptacles

Trunk Cable ❖ Drop Cable ❖ Male & Female



Device Net

Face View of Male	# of Poles	Color Code	Wire AWG	Length	MIN-Series Part Numbers		
					Female Straight	Male Straight	Figure
	5	1-Gray (Drain) 2-Red (V+) 3-Black (V-) 4-White (CAN_H) 5-Blue (CAN_L)	16 18 22	1 FT	MIN-5FR-1-DN MIN-5FR-1-18-DN MIN-5FR-1-22-DN	MIN-5MR-1-DN MIN-5MR-1-18-DN MIN-5MR-1-22-DN	Figure A
Trunk Cable - (Thick Cable)							
	5	1-Gray (Drain) 2-Red (V+) 3-Black (V-) 4-White (CAN_H) 5-Blue (CAN_L)	15 & 18 AWG	1 M 2 M	MINDT-5FR-1M MINDT-5FR-2M	MINDT-5MR-1M MINDT-5MR-2M	Figure B
Drop Cable - (Thin Cable)							
	5	1-Gray (Drain) 2-Red (V+) 3-Black (V-) 4-White (CAN_H) 5-Blue (CAN_L)	22 & 24 AWG	1 M 2 M	MINDD-5FR-1M MINDD-5FR-2M	MINDD-5MR-1M MINDD-5MR-2M	Figure B

Metric and PG threads are available, please consult the factory.

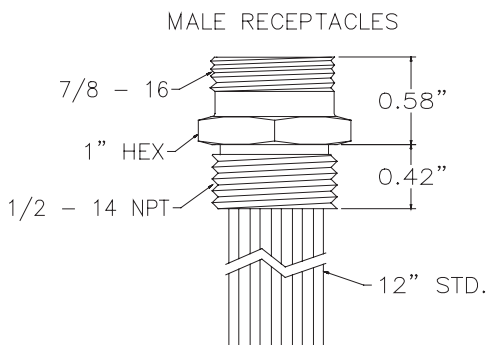


Figure A

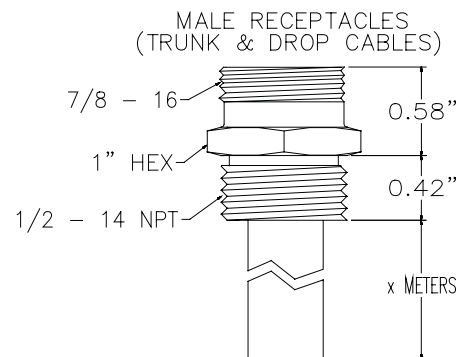


Figure B

Specifications:

Shell:	Clear Anodized Aluminum
Insulator:	105°C, Oil Resistant Yellow PVC
Wire:	16 AWG: UL Style 1015, 600V 18 & 22 AWG: UL Style 1007/1569, 300V
Contacts:	Copper Alloy with Gold Plating
O-Ring:	BUNA-N
Temperature:	-40°C to 90°C (-40°F to +194°F)
Protection:	IP 67
Approvals:	U.S.: UL Recognized Canada: C-UL Recognized



Device Net "T" Connector

Male to Two Female "T"

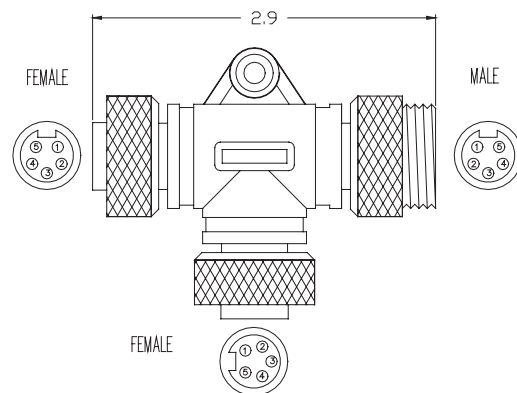
# of Poles	Wire AWG	Rating	Part Number
4	18	300V 8A	MIN-4MFF-T
5	18	300V 8A	MIN-5MFF-T

Specifications:

Connector: Oil Resistant Yellow PVC
 Contacts: Copper Alloy with Gold Plating
 Coupling Nuts: Clear Anodized Aluminum
 Temperature: -40°C to + 105°C (-40°F to +221°F)

Wiring:

Pin 1 to Pin 1 to Pin 1
 Pin 2 to Pin 2 to Pin 2
 Etc.



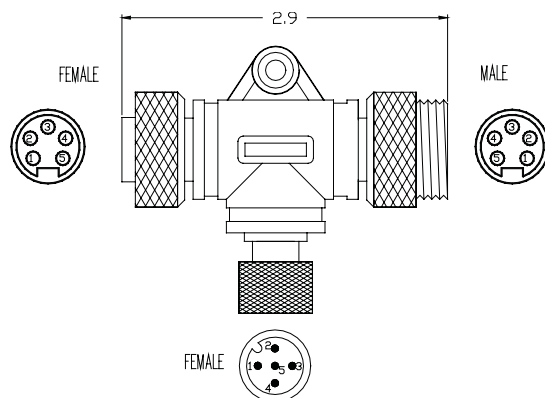
Part Number: MINDC-5MFF-T

Specifications:

Connector: Oil Resistant Yellow PVC
 Contacts: Copper Alloy with Gold Plating
 Coupling Nuts: Clear Anodized Aluminum
 Temperature: -40°C to + 105°C (-40°F to +221°F)

Wiring:

Pin 1 to Pin 1 to Pin 1
 Pin 2 to Pin 2 to Pin 2
 Etc.



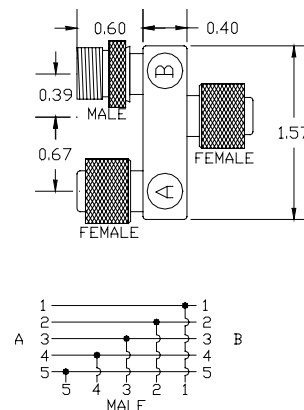
Part Number: MDCDN-5FYMF

Specifications:

Connector: Oil Resistant Yellow PVC
 Contacts: Copper Alloy with Gold Plating
 Coupling Nuts: Clear Anodized Aluminum
 Temperature: -40°C to + 105°C (-40°F to +221°F)

Wiring:

Pin 1 to Pin 1 to Pin 1
 Pin 2 to Pin 2 to Pin 2
 Etc.



Device Net MIN to MDC Cables

Terminating Plugs & Double Ended Cables



Terminating Plugs					
MIN View	MIN Part Number		MDC Part Number		MDC View
	Male	Female	Male	Female	
<p>.25" Through Hole</p>	MINDN-5MP-DP1	MINDN-5FP-DP1	MDCDN-5MP-DP1	MDCDN-5FP-DP1	<p>.25" Through Hole</p>

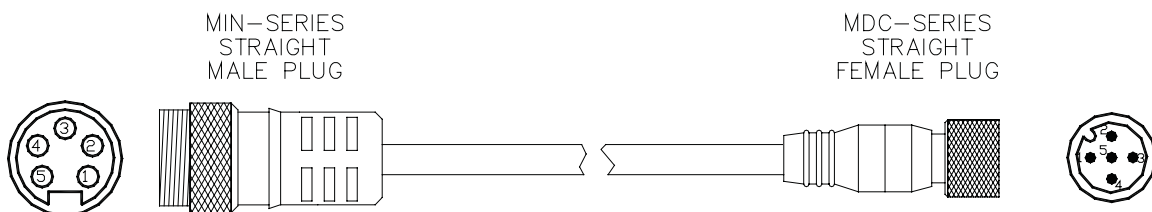
Specifications:

Body: Oil Resistant Yellow PVC
 Contacts: Copper Alloy with Gold Plating
 Coupling Nut: Clear Anodized Aluminum
 Jumpers: 18 AWG Bare Copper Wire, 41 Strands
 Temperature: -40°C to + 105°C (-40°F to +221°F)
 Protection: IP 67
 Approvals: U.S.: UL Recognized; Canada: C-UL Recognized

Wiring:

Pin 4 to Pin 5 with 1/4 Watt 121 OHM 1% Resistor

MIN Series to Micro-DC Series Double Ended Cables



Male MIN to Female MDC Drop Cable						
Face View of Male	# of Poles	Wiring	Wire AWG Rating	Length	Part Number	Face View of Female
	5	1 to 1 2 to 2 3 to 3 4 to 4 5 to 5	22 & 24 300V 3A	1 M 2 M 5 M 10 M	MCDD-5MFP-1M MCDD-5MFP-2M MCDD-5MFP-5M MCDD-5MFP-10M	

Right Angle Versions are available, please consult the factory.

MIN Series Specifications:

Insulator: Oil Resistant Yellow PVC
 Contacts: Copper Alloy with Gold Plating
 Coupling: Clear Anodized Aluminum
 Cable: Drop Cable
 Temperature: -40°C to + 80°C (-40°F to +176°F)

MDC Series Specifications:

Insulator: Polyamide
 Contacts: Copper Alloy with Gold Plating
 Coupling: Nickel Plated Brass
 Cable: Drop Cable
 Temperature: -40°C to + 80°C (-40°F to +176°F)



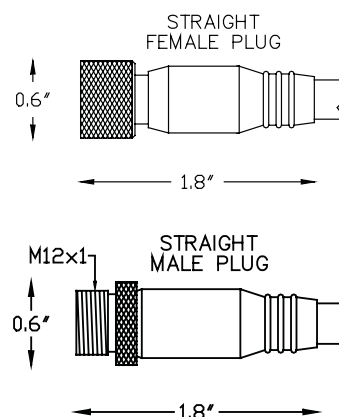
Device Net MDC Cables

Single & Double Ended Cables

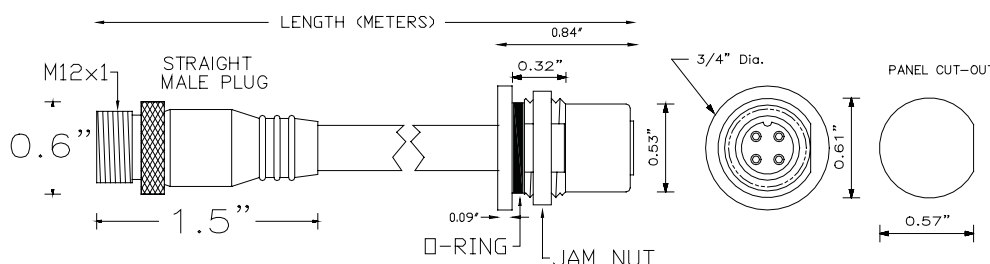
Face View of Male	# of Poles	Color Code	Wire AWG Rating	Length	Female Straight	Male Straight	Male - Female Extension
	5	1-Bare (Drain) 2-Red (V+) 3-Black (V-) 4-White (CAN_H) 5-Blue (CAN_L)	22 & 24 300V 3A	1 M 2 M 5 M 10 M	MDCDD-5FP-1M MDCDD-5FP-2M MDCDD-5FP-5M MDCDD-5FP-10M	MDCDD-5MP-1M MDCDD-5MP-2M MDCDD-5MP-5M MDCDD-5MP-10M	MDCDD-5MFP-1M MDCDD-5MFP-2M MDCDD-5MFP-5M MDCDD-5MFP-10M

Specifications:

Body: Oil Resistant Yellow PVC
 Insulator: Polyamide
 Contacts: Copper Alloy with Gold Plating
 Coupling Nut: Nickel Plated Brass
 Cable: Oil Resistant Gray PVC Jacket,
 Rated at 150V, 80°C,
 22 AWG Tinned Copper Power Pair
 24 AWG Tinned Copper Data Pair
 Temperature: -40°C to + 80°C (-40°F to +176°F)
 Protection: IP 67



Male Plug to Back Mount Female Receptacle					
Face View of Male	# of Poles	Wire AWG Rating	Length	Female Straight	Face View of Female
	5	22 & 24 300V 3A	1 M 2 M 5 M 10 M	MDCDD-5FR-5MP-1M MDCDD-5FR-5MP-2M MDCDD-5FR-5MP-5M MDCDD-5FR-5MP-10M	



Device Net MDC Receptacles

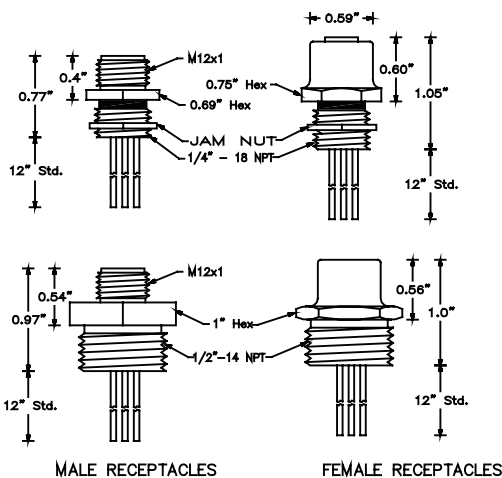
Male & Female Receptacles with Leads



Device Net

Face View of Male	# of Poles	Color Code	Wire AWG	Thread	Female Straight	Male Straight
Standard Receptacles						
	5	1-Gray (Drain) 2-Red (V+) 3-Black (V-) 4-White (CAN_H) 5-Blue (CAN_L)	18	1/2" NPT 1/4" NPT	MDC-5FR-2-18-DN MDC-5FR-4-18-DN	MDC-5MR-2-18-DN MDC-5MR-4-18-DN
	5	1-Gray (Drain) 2-Red (V+) 3-Black (V-) 4-White (CAN_H) 5-Blue (CAN_L)	22	1/2" NPT 1/4" NPT	MDC-5FR-2-22-DN MDC-5FR-4-22-DN	MDC-5MR-2-22-DN MDC-5MR-4-22-DN
Back Mount Receptacles						
	5	1-Gray (Drain) 2-Red (V+) 3-Black (V-) 4-White (CAN_H) 5-Blue (CAN_L)	18	NA	MDC-5FR-BM-18-DN	MDC-5MR-BM-18-DN
	5	1-Gray (Drain) 2-Red (V+) 3-Black (V-) 4-White (CAN_H) 5-Blue (CAN_L)	22	NA	MDC-5FR-BM-22-DN	MDC-5MR-BM-22-DN

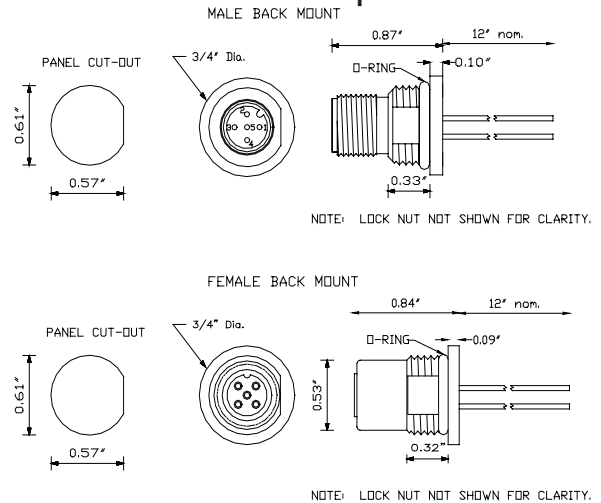
Standard Receptacles



MALE RECEPTACLES

FEMALE RECEPTACLES

Back Mount Receptacles



NOTE: LOCK NUT NOT SHOWN FOR CLARITY.

Specifications:

Body: Clear Anodized Aluminum
 Insulator: Polyamide
 Wire: 18 & 22 AWG 300V, UL Style 1007/1569
 Contacts: Copper Alloy with Gold Plating
 Jam Nut: 1/4" NPT: Steel Zinc Plate
 Back Mount: Nickel Plated Brass

O-Ring: BUNA-N
 Temperature: -40°C to +105°C (-40°F to +221°F)
 Protection: IP 67
 Approvals: U.S.: UL Recognized
 Canada: C-UL Recognized



Device Net MDC Receptacles

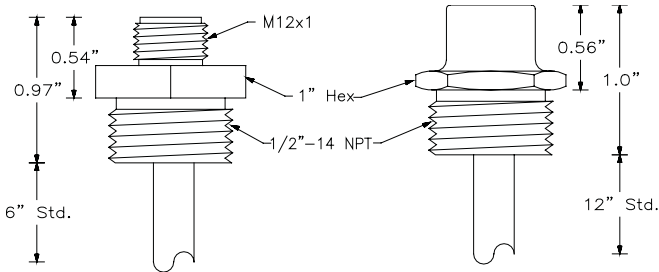
Male & Female Receptacles with Drop Cable

Device Net

Face View of Male	# of Poles	Color Code	Length	Thread	Female Straight	Male Straight
Standard Receptacles with Drop Cable						
	5	1-Drain Wire 2-Red (V+) 3-Black (V-) 4-White (CAN_H) 5-Blue (CAN_L)	1 M 2 M	1/2" NPT	MDCDD-5FR-1M MDCDD-5FR-2M	MDCDD-5MR-1M MDCDD-5MR-2M
Back Mount Receptacles with Drop Cable						
	5	1-Drain Wire 2-Red (V+) 3-Black (V-) 4-White (CAN_H) 5-Blue (CAN_L)	1 M 2 M	NA	MDCDD-5FR-BM-1M MDCDD-5FR-BM-2M	MDCDD-5MR-BM-1M MDCDD-5MR-BM-2M

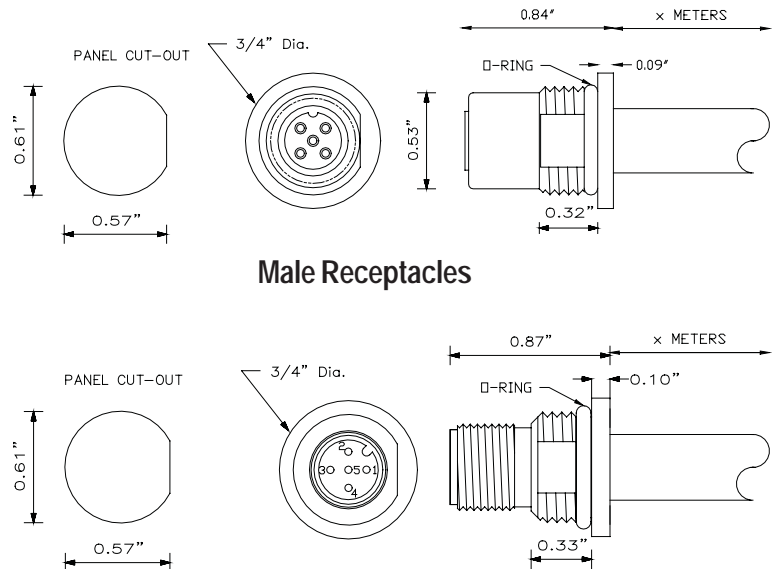
Back Mount Receptacles with Drop Cables

Standard Receptacles with Drop Cables



Male Receptacles

Female Receptacles



Male Receptacles

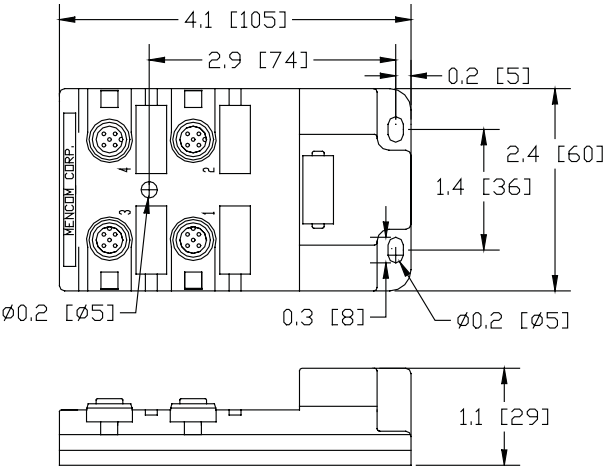
Female Receptacles

NOTE: LOCK NUT NOT SHOWN FOR CLARITY.

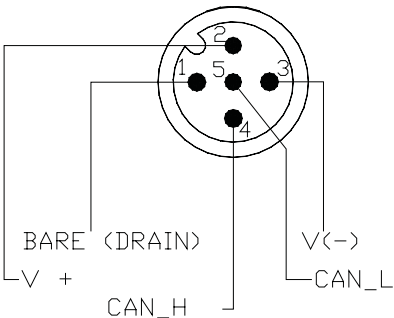
Device Net Junction Blocks (No Electronics)

4 Port

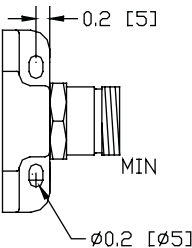
Device Net



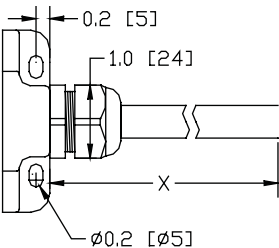
All PORT Pin Wiring



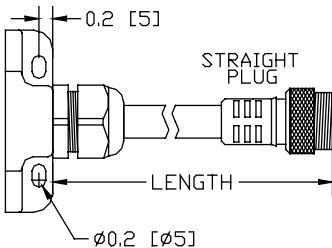
Receptacle



Cable



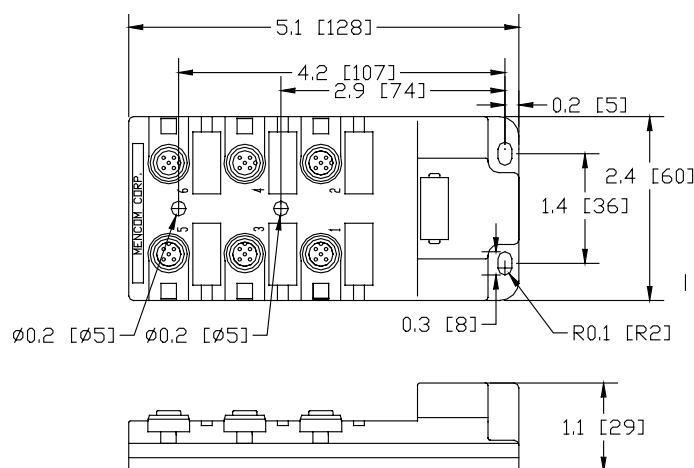
Plug



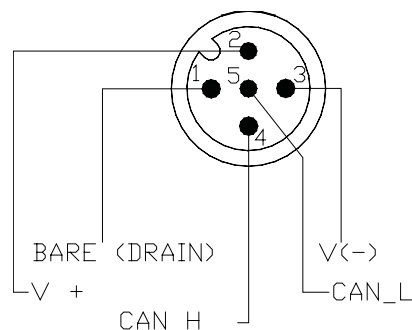
Trunk Connection	Face View of Male	Color Code Pin Out	Wire AWG Rating	Length (Meters)	Part Number
Receptacle		PIN 1 - (Drain) PIN 2 - (V+) PIN 3 - (V-) PIN 4 - (CAN_H) PIN 5 - (CAN_L)	300V 8A	NA	JDN-450-005-M000
Plug		PIN 1 - (Drain) PIN 2 - (V+) PIN 3 - (V-) PIN 4 - (CAN_H) PIN 5 - (CAN_L)	300V 8A	0.3 M 2 M 5 M	JDN-450-005-M003 JDN-450-005-M020 JDN-450-005-M050
Cable	N/A	1 - Bare (Drain) 2 - Red (V+) 3 - Black (V-) 4 - White (CAN_H) 5 - Blue (CAN_L)	15 & 18 300V 8A	0.3 M 2 M 5 M	JDN-450-005-C003 JDN-450-005-C020 JDN-450-005-C050
Trunk to Port Wiring					
Trunk			All PORTS		
PIN # 1 PIN # 2 PIN # 3 PIN # 4 PIN # 5			PIN # 1 PIN # 2 PIN # 3 PIN # 4 PIN # 5		

Device Net Junction Blocks (No Electronics)

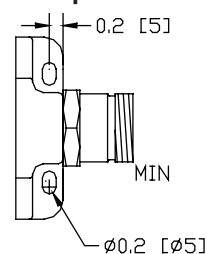
6 Port



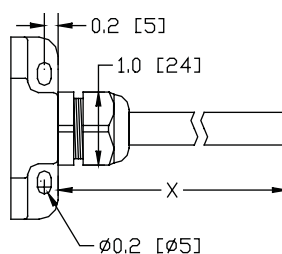
All PORT Pin Wiring



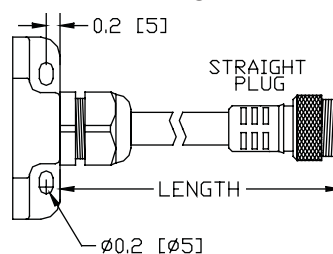
Receptacle





Cable



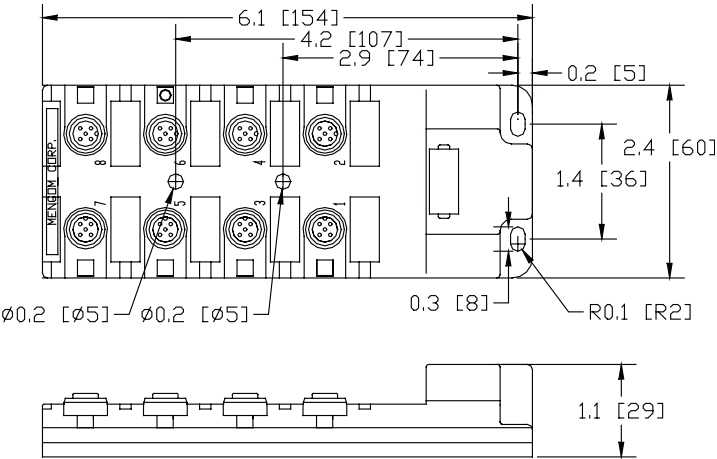
Plug



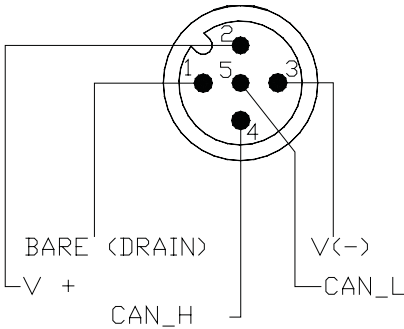
Trunk Connection	Face View of Male	Color Code Pin Out	Wire AWG Rating	Length (Meters)	Part Number
Receptacle		PIN 1 - (Drain) PIN 2 - (V+) PIN 3 - (V-) PIN 4 - (CAN_H) PIN 5 - (CAN_L)	300V 8A	NA	JDN-650-005-M000
Plug		PIN 1 - (Drain) PIN 2 - (V+) PIN 3 - (V-) PIN 4 - (CAN_H) PIN 5 - (CAN_L)	300V 8A	0.3M 2M 5M	JDN-650-005-M003 JDN-650-005-M020 JDN-650-005-M050
Cable	N/A	1 - Bare (Drain) 2 - Red (V+) 3 - Black (V-) 4 - White (CAN_H) 5 - Blue (CAN_L)	15 & 18 300V 8A	0.3 M 2 M 5 M	JDN-650-005-C003 JDN-650-005-C020 JDN-650-005-C050
Trunk to Port Wiring					
Trunk			All PORTS		
PIN # 1			PIN # 1		
PIN # 2			PIN # 2		
PIN # 3			PIN # 3		
PIN # 4			PIN # 4		
PIN # 5			PIN # 5		

Device Net Junction Blocks (No Electronics)

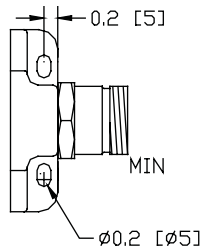
8 Port



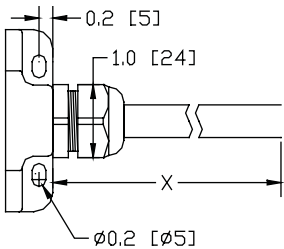
All PORT Pin Wiring



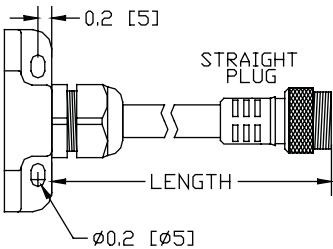
Receptacle



Cable



Plug

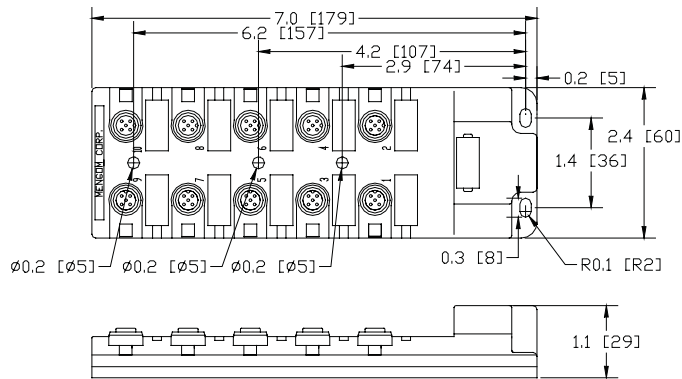


Trunk Connection	Face View of Male	Color Code Pin Out	Wire AWG Rating	Length (Meters)	Part Number
Receptacle		PIN 1 - (Drain) PIN 2 - (V+) PIN 3 - (V-) PIN 4 - (CAN_H) PIN 5 - (CAN_L)	300V 8A	NA	JDN-850-005-M000
Plug		PIN 1 - (Drain) PIN 2 - (V+) PIN 3 - (V-) PIN 4 - (CAN_H) PIN 5 - (CAN_L)	300V 8A	0.3 M 2 M 5 M	JDN-850-005-M003 JDN-850-005-M020 JDN-850-005-M050
Cable	N/A	1 - Bare (Drain) 2 - Red (V+) 3 - Black (V-) 4 - White (CAN_H) 5 - Blue (CAN_L)	15 & 18 300V 8A	0.3 M 2 M 5 M	JDN-850-005-C003 JDN-850-005-C020 JDN-850-005-C050
Trunk to Port Wiring					
Trunk			All PORTS		
PIN # 1 PIN # 2 PIN # 3 PIN # 4 PIN # 5			PIN # 1 PIN # 2 PIN # 3 PIN # 4 PIN # 5		

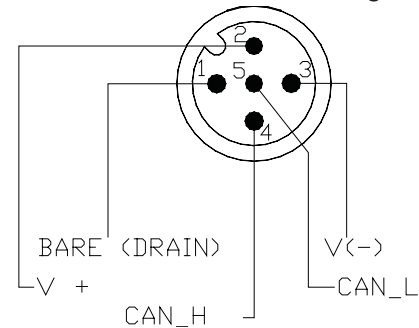
Device Net

Device Net Junction Blocks (No Electronics)

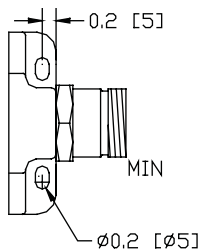
10 Port



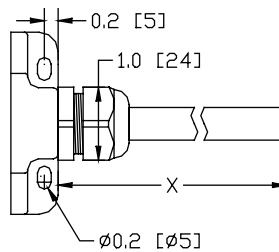
All PORT Pin Wiring



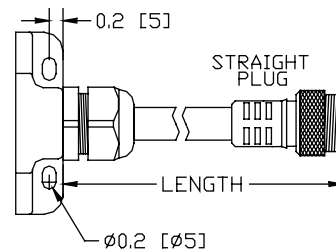
Receptacle



Cable



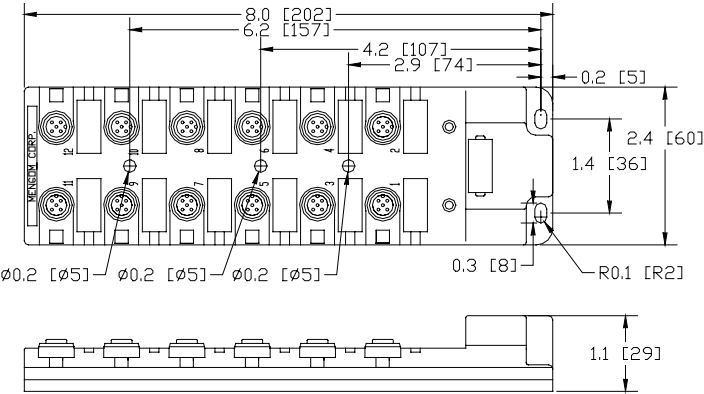
Plug



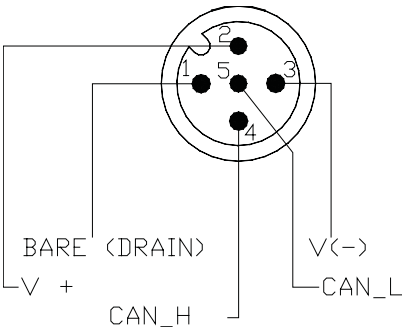
Trunk Connection	Face View of Male	Color Code Pin Out	Wire AWG Rating	Length (Meters)	Part Number
Receptacle		PIN 1 - (Drain) PIN 2 - (V+) PIN 3 - (V-) PIN 4 - (CAN_H) PIN 5 - (CAN_L)	300V 8A	NA	JDN-050-005-M000
Plug		PIN 1 - (Drain) PIN 2 - (V+) PIN 3 - (V-) PIN 4 - (CAN_H) PIN 5 - (CAN_L)	300V 8A	0.3 M 2 M 5 M	JDN-050-005-M003 JDN-050-005-M020 JDN-050-005-M050
Cable	N/A	1 - Bare (Drain) 2 - Red (V+) 3 - Black (V-) 4 - White (CAN_H) 5 - Blue (CAN_L)	15 & 18 300V 8A	0.3 M 2 M 5 M	JDN-050-005-C003 JDN-050-005-C020 JDN-050-005-C050
Trunk to Port Wiring					
Trunk			All PORTS		
PIN # 1			PIN # 1		
PIN # 2			PIN # 2		
PIN # 3			PIN # 3		
PIN # 4			PIN # 4		
PIN # 5			PIN # 5		

Device Net Junction Blocks (No Electronics)

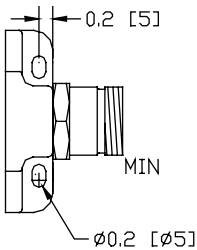
12 Port



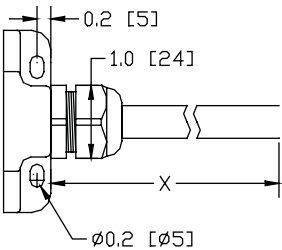
All PORT Pin Wiring



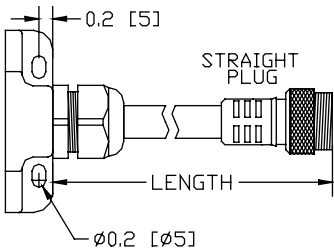
Receptacle



Cable



Plug



Trunk Connection	Face View of Male	Color Code Pin Out	Wire AWG Rating	Length (Meters)	Part Number
Receptacle		PIN 1 - (Drain) PIN 2 - (V+) PIN 3 - (V-) PIN 4 - (CAN_H) PIN 5 - (CAN_L)	300V 8A	NA	JDN-250-005-M000
Plug		PIN 1 - (Drain) PIN 2 - (V+) PIN 3 - (V-) PIN 4 - (CAN_H) PIN 5 - (CAN_L)	300V 8A	0.3 M 2 M 5 M	JDN-250-005-M003 JDN-250-005-M020 JDN-250-005-M050
Cable	N/A	1 - Bare (Drain) 2 - Red (V+) 3 - Black (V-) 4 - White (CAN_H) 5 - Blue (CAN_L)	15 & 18 300V 8A	0.3 M 2 M 5 M	JDN-250-005-C003 JDN-250-005-C020 JDN-250-005-C050
Trunk to Port Wiring					
Trunk			All PORTS		
PIN # 1 PIN # 2 PIN # 3 PIN # 4 PIN # 5			PIN # 1 PIN # 2 PIN # 3 PIN # 4 PIN # 5		

Device Net

